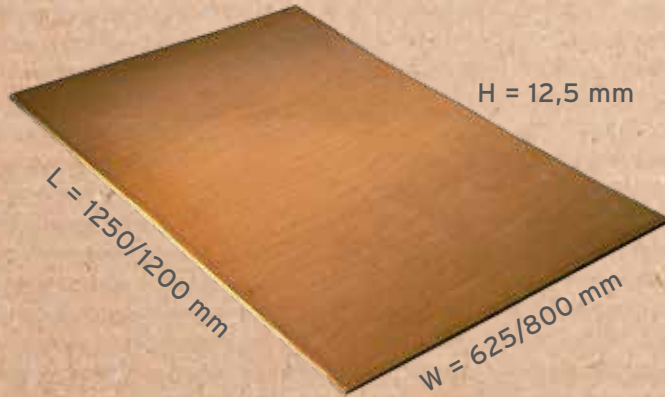


Sound Insulation

with PhoneStar ST Tri



ST Tri



H = 12,5 mm

L = 1250/1200 mm

W = 625/800 mm

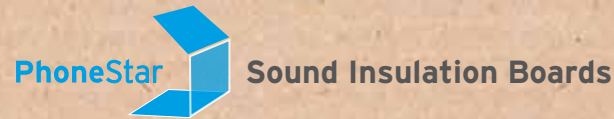


PhoneStar ST Tri - cross section

Specifications*:

Length x Width	1250 x 625 mm 1200 x 800 mm
Thickness:	12,5 mm
Surface/Board	0,78 m ²
Weight/m ²	17,5 kg
Impact Sound Insulation (up to)	$\Delta L_w = 20$ dB
Airborne Sound Insulation (up to)	$R_w = 34$ dB
Fire Resisting Material Category	B2
Surface Load	5 kN/m ²
Point Load	4 kN
Sd-Value	ca. 0,2 m
Thermoconductivity	0,17 W/(mK)
Scope of Application	Interior Construction

*For detailed information we refer to our Technical Data Sheet on our website: www.wolf-bavaria.com



- Made from ecological, environmentally friendly, and naturally basic materials: sand and wood
- Sound insulation in harmony with nature
- Modularly combinable with the Wolf Bavaria Underfloor Heating-Systems

Wolf Bavaria GmbH
Gutenbergstraße 8
91560 Heilsbronn
Tel.: +49 (0) 9872 95398-0
Fax: +49 (0) 9872 95398-11
www.wolf-bavaria.com
info@wolf-bavaria.com

Received from:

Professional
**SOUND
INSU-
LATION**

Effective and Easy



The Drywall Board

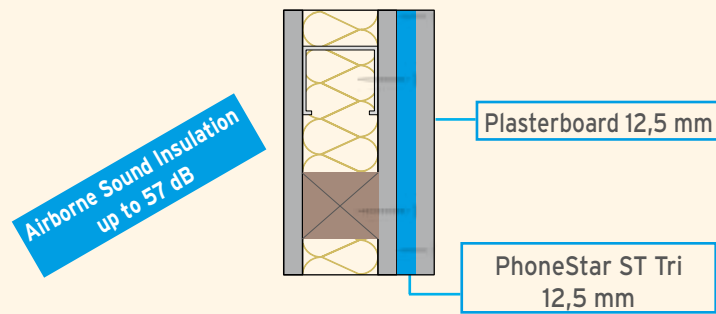


www.wolf-bavaria.com

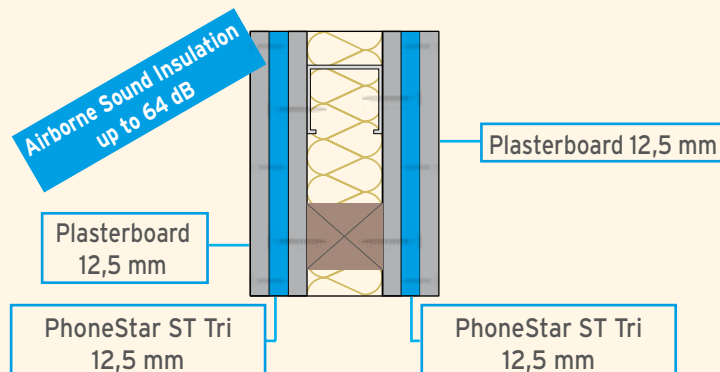
Professional SOUND INSULATION - Effective and Easy

EXISTING BUILDING

One-Sided Covering of an existing Partition Wall



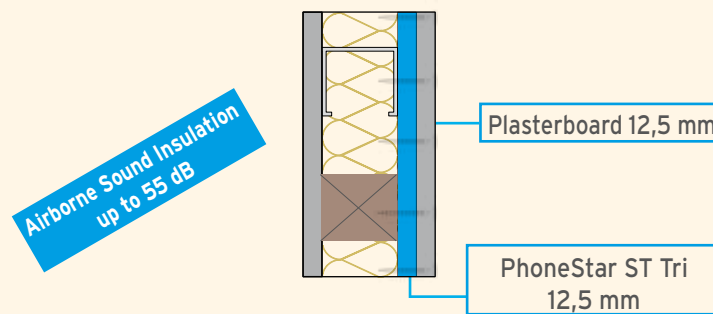
Double-Sided Covering of an existing Partition Wall



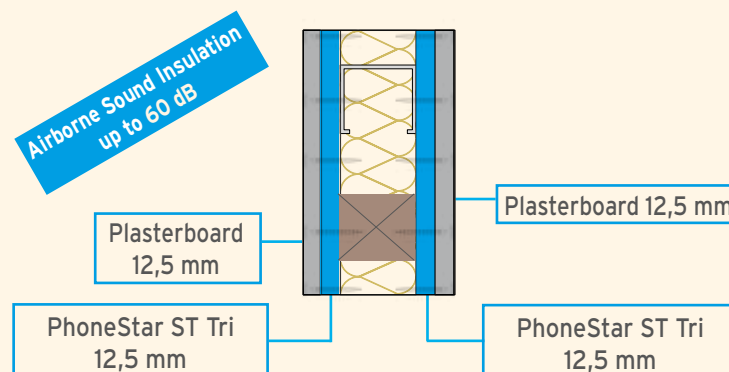
- Simply bolt PhoneStar board on existing wall
- Construction height of only 25 mm

NEW BUILDING

One-Sided Covering of a Partition Wall



Double-Sided Covering of a Partition Wall



- Very slim construction height
- Increased sound insulation with partition wall

ADVANTAGES:

Cost-Savings:

- No filling required with PhoneStar Boards
- Fast and easy installing
- Outside covering with standardized-plasterboards
- No detached facing plywood

Ecological:

- Natural basic materials for sustainable constructions

Technical:

- Gaining of space due to its slim construction height
- Easy to cut and process
- High Bearing Load
- Due to its thickness of 12,5 mm, it suits all Drywall Installation-Systems



Our Planning-Folder offers further PhoneStar Installation Methods. Download from our website: www.wolf-bavaria.com/downloadcenter